

High Gain LTE Antenna

694MHz - 3000MHz

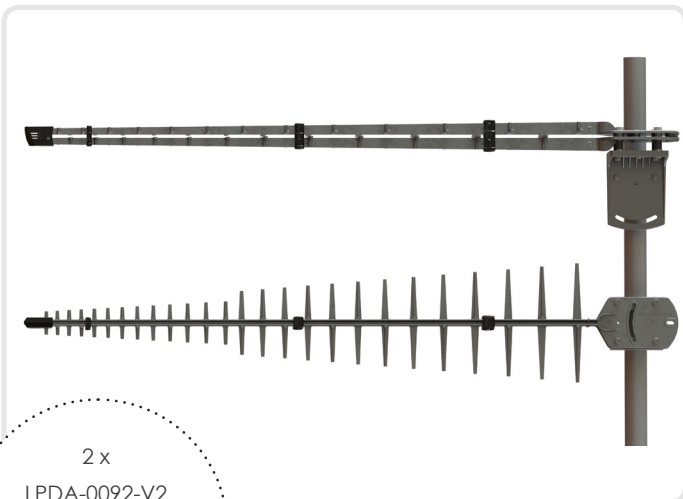
Product Code: A-LPDA-0092

This high-gain wideband directional antenna covers all international cellular, mobile and wireless data bands including GSM 900/GSM1800/UMTS/LTE bands as well as extended cellular and WiMAX bands such as European/USA "Digital Dividend bands" and 2.3-2.7GHz licensed and unlicensed data bands. Its configuration is suitable for various wireless communications systems.

This antenna is unique in its combination of ultra wide-band operator with a consistent high-gain performance.

It has been successfully used in extreme weather environments in Africa and Europe with close to zero failures.

A firm favorite, in any area where operators are having signal challenges.



2 x
LPDA-0092-V2
mounted for MiMo LTE
(using 1xBRKT-030)



WHERE DO YOU USE THIS?

LTE

3G

GSM

WIMAX

WIFI

GPRS

EDGE

HSPA

CDMA2000

EVDO

ELECTRICAL:

Frequency in MHz:	694-3000
Gain (Max):	12 dBi
VSWR:	<2.0:1
Feed Power Handling:	10 W
E-Plane 3 dB Beamwidth:	50° (±5°)
H-Plane 3 dB Beamwidth:	55° (±5°)
Front to Back:	20dB (±3dB)
Nominal Input Impedance:	50 Ohm
Polarisation:	Linear

MECHANICAL:

Dimensions (L x W x D):	1100 mm x 180 mm x 60 mm
Packaged Dimensions:	1120 mm x 210 mm x 70 mm
Weight:	1,29 kg
Packaged Weight:	1,94 kg

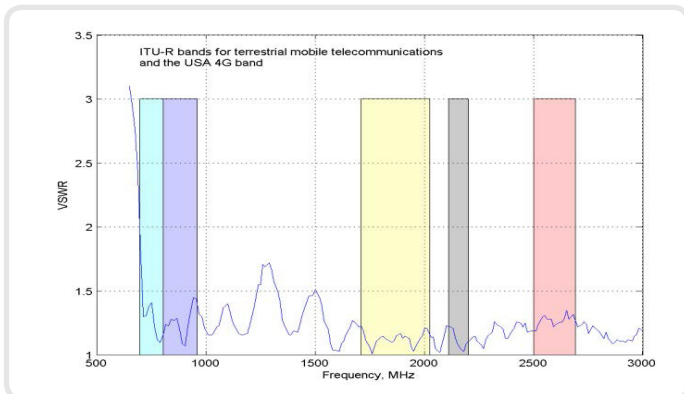
ENVIRONMENTAL:

Wind Survival:	160km/h
Temperature Range (Operating):	-40°C to +70°C
Thermal Shock:	-40 °C to +70 °C: 10 Cycles
Water Ingress Rating:	IP65 (NEMA 4X)
Relative Humidity:	100% at 30°C
Salt Spray:	MIL-STD 810F
Flammability Rate:	N/A
UV Specification:	Minimum 7 years outdoor usage

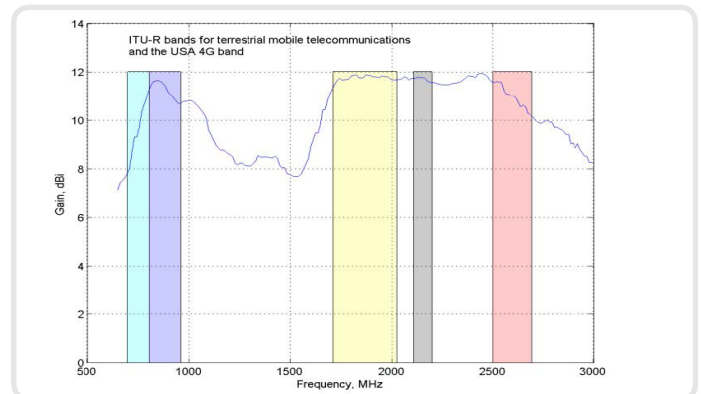
INCLUDED WITH PRODUCT:

Mounting Bracket:	Pole mount up to 50mm
Cable Length:	7 m
Cable Type:	HDF195
Connector:	SMA(m) connector (Brass/Gold Plated)

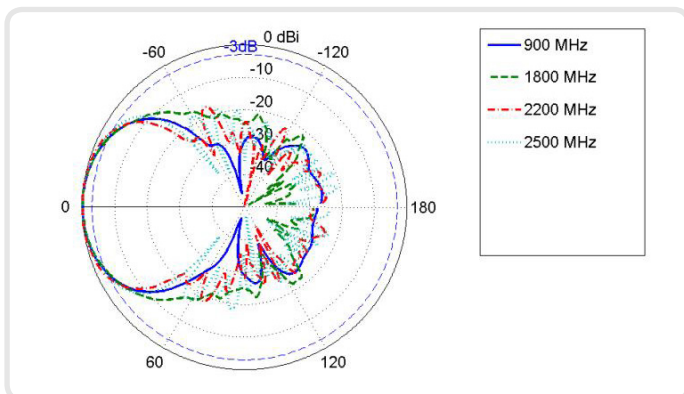
PLOTS:



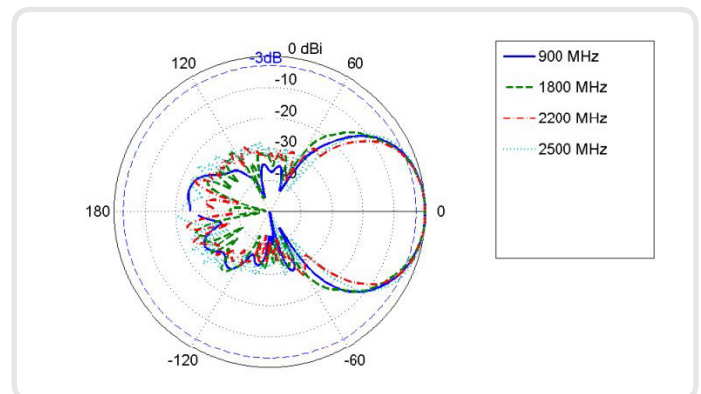
VSWR



Gain



E-Plane



H-Plane